

产品概述

ASCO全新的双隔室隔爆结构电磁头能够有效防护潮气和腐蚀，从而保证内部线圈的可靠性，完美适用于严苛环境应用。新设计同时具有灵便安装和快捷接线等特点，确保现场安装工作安全可靠。基于ASCO 327&551/553系列成熟可靠的电磁阀技术，双隔室全隔爆结构的出现助力客户实现高效运营保障系统稳定。

产品特点

- 电磁头符合危险环境应用，ATEX/IEC Ex认证, Directive 2014/34/EU
- CCC Ex认证, 符合: GB3836.1-2010, GB3836.2-2010, GB12476.1-2013, GB12476.5-2013
- 防爆线圈H级绝缘
- 外部材质全316L不锈钢结构
- 双隔室结构减缓呼吸效应(防止潮气侵蚀线圈)
- 新型Y端子防止不良接线导致的电气“闪络”
- 能够根据现场安装要求灵活调整电缆进线方向
- 接线隔室盖与底部留有间隙, 防止咬合电缆外皮导致短路
- 内置限压抑流二极管防止关断反向尖峰电压
- 直动式阀体和先导式阀体可选



WSJE 327



WSJE 551



WSJE 553



结构材质

外壳:	316L 不锈钢
阀盖:	不锈钢
阀芯, 套筒和动静铁芯:	不锈钢
垫片:	(F) VMQ / VMQ/FPM

机械参数

压力范围:	0.35 至 10 bar
介质:	压缩空气 / 燃气, 水, 轻油 ($\leq 65\text{mm}^2/\text{s}$)

防爆安全码

气体环境:	Ex db IIC T6/ Gb
粉尘环境:	Ex tb IIIC T85° C Db (ATEX) / Ex tD A21 IP6X T80° C (CCC Ex)

外壳防护等级

IP66/67

电气参数

标准电压	DC: 24V AC: 110V, 115V, 220V, 230V / 50-60Hz
非标电压	DC: 12V, 48V, 100V, 110V, 125V AC: 24V, 48V, 100V, 120V, 200V, 240V / 50-60Hz
电压允许波动范围	-10% to +10%

温度等级

WSJE327&551/553系列允许最低环境温度为-40°C。
根据最高允许环境温度和线圈冷态保持功耗，来选择确定防爆温度等级“T”

功耗等级	电压范围	线圈型号	绝缘等级	防爆温度等级“T” ⁽¹⁾ 下最高允许环境温度	
				T6 (G) 80 (D)	T4 (G) 130 (D)
低功耗 (LP)					
1.8W DC	24V	WSJE-M12L	H	60°C	-
减功耗 (RP)					
3.6W DC	12~125V	WSJE-M12L	H	60°C	-
3.7W AC	24~120V		F	60°C	-
基本功耗 (BP)					
10W AC	220~230V	WSJE-M12B	F	-	60°C

⁽¹⁾ 电磁阀使用的环境温度不能超过允许的最高环境温度

WSJE327系列参数

密封	管径 (NPT)	孔径 (mm)	Cv (gallon / min)	操作压力范围 (bar)				功耗 DC/AC (W)	型号	环境/介质温度 (°C)		手动操作		其他
				最小	最大					最小	最大	自保持	瞬动	
					压缩空气/燃气	水	轻油							
327系列, 316L 不锈钢, 自动复位, 通用型														
FPM	1/4"	5.7	0.52	0	10	10	10	10	WSJE8327B002	-20	60	MS	MO	
VMQ	1/4"	5.7	0.52	0	10	10	10	10	WSJE8327B012	-40	60	MS	MO	
FPM	1/4"	5.7	0.52	0	10	10	10	3.6/3.7	WSJE8327B102	-20	60	MS	MO	
(F)VMQ	1/4"	5.7	0.52	0	10	10	10	3.6/3.7	WSJE8327B112	-40	60	MS	MO	
FPM	1/4"	5.7	0.52	0	10	10	10	1.8	WSJE8327B302	-20	60	MS	MO	
(F)VMQ	1/4"	5.7	0.52	0	10	10	10	1.8	WSJE8327B312	-40	60	MS	MO	
327系列, 316L 不锈钢, 手动复位, 按钮释放														
FPM	1/4"	5.7	0.52	0	10	10	10	10	WSJE8327B022	-20	60	-	电磁阀线圈处与失电状态, 该按钮能够作为手动操作功能使用	❖
VMQ	1/4"	5.7	0.52	0	10	10	10	10	WSJE8327B072	-40	60	-		❖
FPM	1/4"	5.7	0.52	0	10	10	10	3.6/3.7	WSJE8327B122	-20	60	-		
(F)VMQ	1/4"	5.7	0.52	0	10	10	10	3.6/3.7	WSJE8327B172	-40	60	-		
FPM	1/4"	5.7	0.52	0	10	10	10	1.8	WSJE8327B322	-20	60	-		❖
(F)VMQ	1/4"	5.7	0.52	0	10	10	10	1.8	WSJE8327B372	-40	60	-		❖
327系列, 316L 不锈钢, 手动复位, 按钮释放, 带断电防误操功能														
FPM	1/4"	5.7	0.52	0	10	10	10	10	WSJE8327B032	-20	60	-	-	❖
(F)VMQ	1/4"	5.7	0.52	0	10	10	10	10	WSJE8327B082	-40	60	-	-	❖
FPM	1/4"	5.7	0.52	0	10	10	10	3.6/3.7	WSJE8327B132	-20	60	-	-	
(F)VMQ	1/4"	5.7	0.52	0	10	10	10	3.6/3.7	WSJE8327B182	-40	60	-	-	
FPM	1/4"	5.7	0.52	0	10	10	10	1.8	WSJE8327B332	-20	60	-	-	❖
(F)VMQ	1/4"	5.7	0.52	0	10	10	10	1.8	WSJE8327B382	-40	60	-	-	❖

❖未上市款, 如有需求请联系ASCO

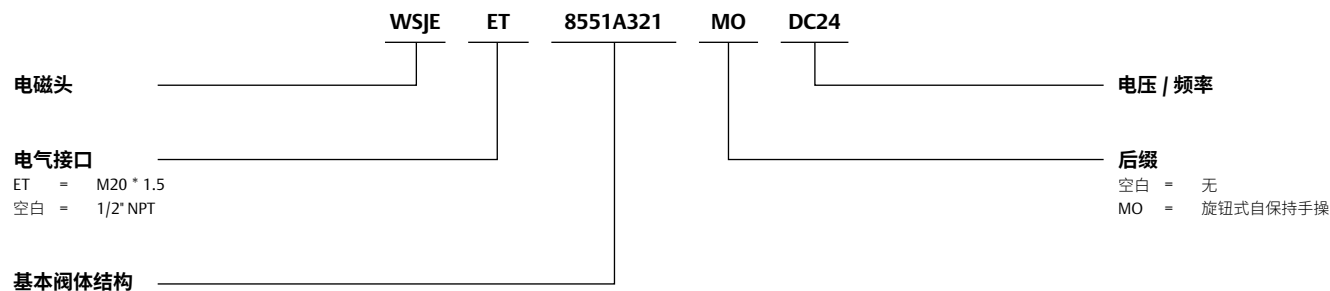
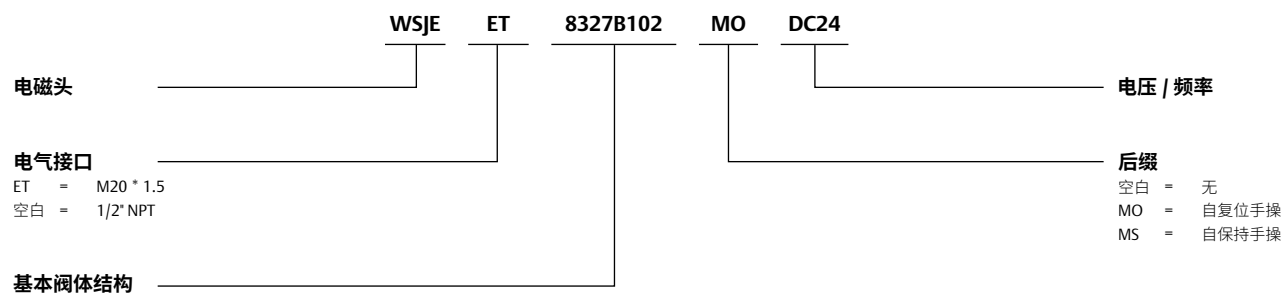
WSJE551/553系列参数

密封	管径 (NPT)	孔径 (mm)	Cv (gallon /min)	操作压力范围 (bar)			功耗 DC(W)	型号	环境/介质温度 (°C)		手动操作自保持	其他	
				最小	最大				最小	最大			
					压缩空气	-	-						
551系列, 单线圈, NAMUR, 316L不锈钢阀体													
VMQ	1/4"	6	0.7	2	10	-	-	1.8	WSJE8551A309	-40	60	MS	3/2或5/2
551系列, 单线圈, 316L不锈钢阀体													
VMQ	1/4"	6	0.87	2	10	-	-	1.8	WSJE8551A321	-40	60	MS	5/2
VMQ	1/4"	6	0.87	2	10	-	-	1.8	WSJE8551A313	-40	60	MS	3/2
551系列, 双线圈, NAMUR, 316L不锈钢阀体													
VMQ	1/4"	6	0.7	2	10	-	-	1.8	WSJE8551A310	-40	60	MS	3/2或5/2
551系列, 双线圈, 316L不锈钢阀体													
VMQ	1/4"	6	0.87	2	10	-	-	1.8	WSJE8551A322	-40	60	MS	5/2
VMQ	1/4"	6	0.87	2	10	-	-	1.8	WSJE8551A314	-40	60	MS	3/2
553系列, 单线圈, NAMUR, 316L不锈钢阀体													
VMQ	1/2"	13	2.9	2	10	-	-	1.8	WSJE8553A309	-40	60	MS	3/2或5/2
553系列, 单线圈, 316L不锈钢阀体													
VMQ	1/2"	13	3.7	2	10	-	-	1.8	WSJE8553A321	-40	60	MS	5/2
VMQ	1/2"	13	3.7	2	10	-	-	1.8	WSJE8551A313	-40	60	MS	3/2
553系列, 双线圈, NAMUR, 316L不锈钢阀体													
VMQ	1/2"	13	2.9	2	10	-	-	1.8	WSJE8553A310	-40	60	MS	3/2或5/2
553系列, 双线圈, 316L不锈钢阀体													
VMQ	1/2"	13	3.7	2	10	-	-	1.8	WSJE8553A322	-40	60	MS	5/2
VMQ	1/2"	13	3.7	2	10	-	-	1.8	WSJE8553A314	-40	60	MS	3/2

订货信息

全隔爆电磁阀以WSJE为型号的前缀

举例:



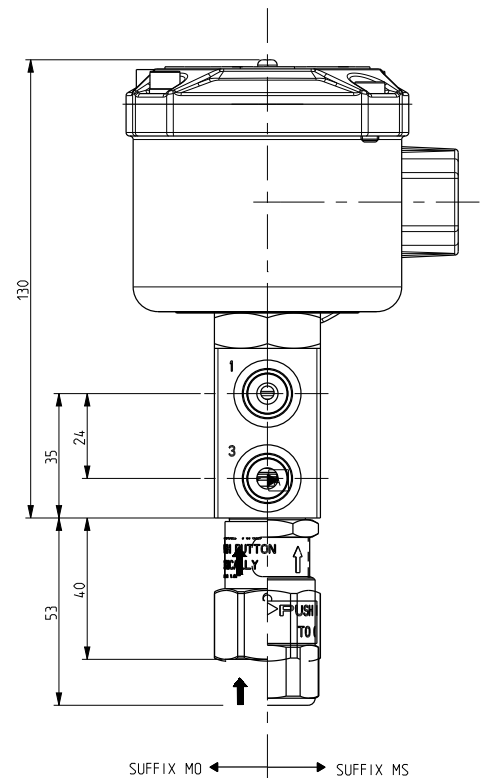
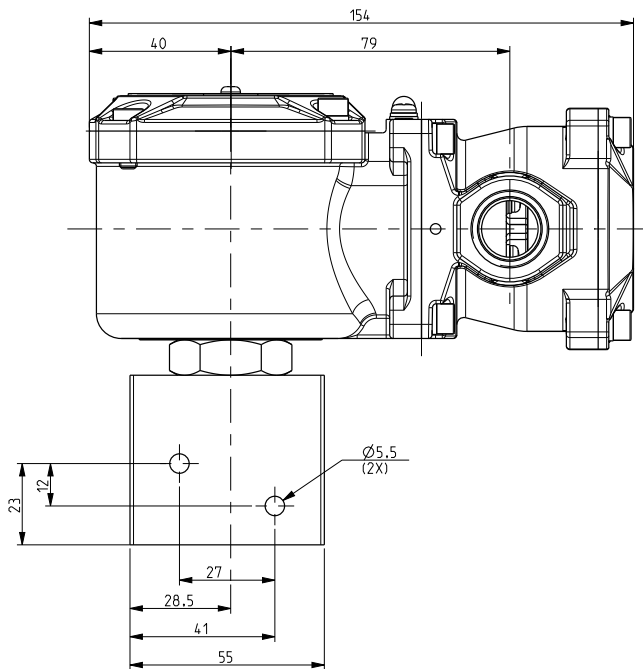
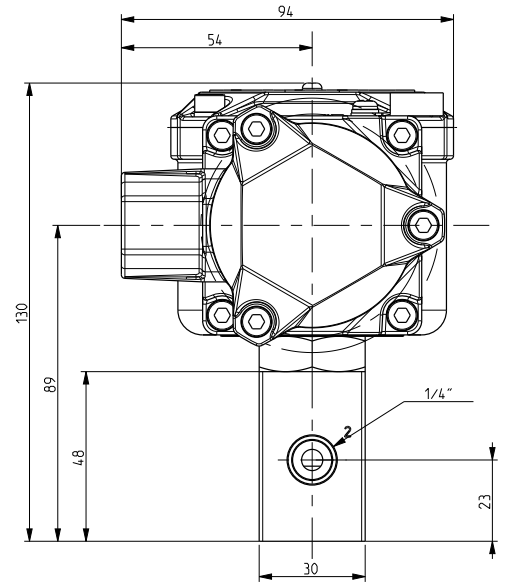
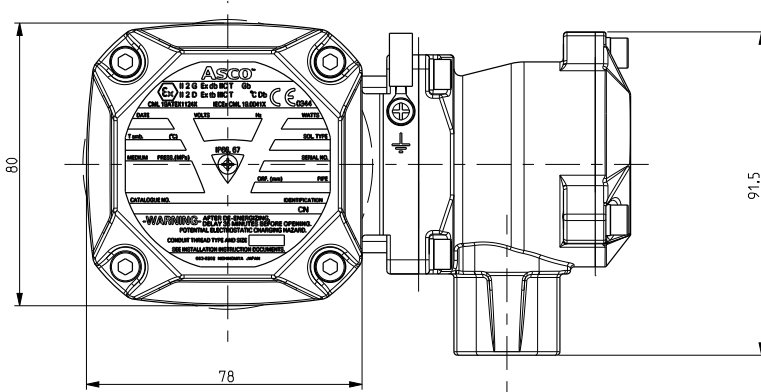
安装

- 每个电磁阀包装内都含有一份安装维护说明书
- 所有符合Ex d IIC全隔爆标准的电缆都能适配1/2" NPT (M20 x 1.5) 的进线接口
- 内外接地连接设计
- 线圈隔室能够360度连续旋转以匹配电缆朝向
- 接线隔室能够90度旋转以匹配进线方向。安装维护说明书里详细描述了如何调整方向
- 电磁阀可以任意位置安装从而也不影响正常运行与操作

DIMENSIONS (mm), WEIGHT(kg)

WSJE 327 系列

约重: 3.5kg

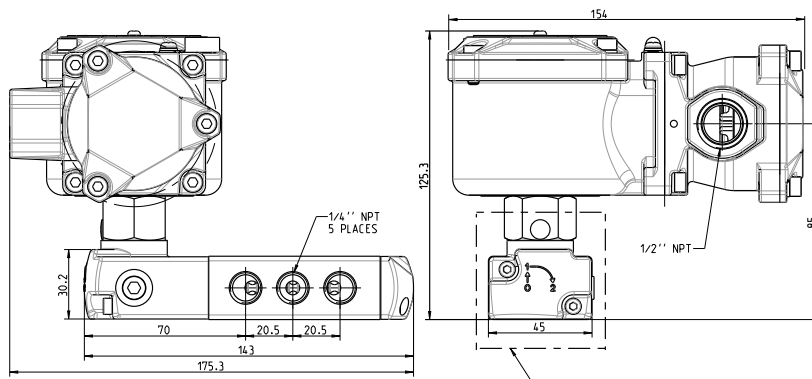
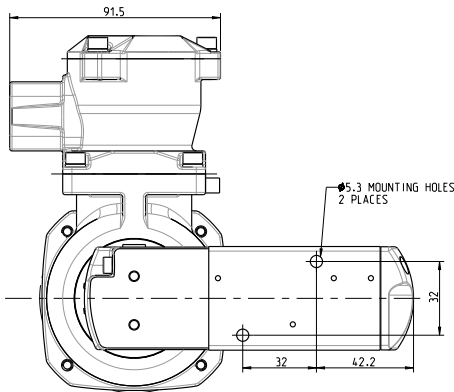


TR000447ZHCN-01_10-21

DIMENSIONS (mm), WEIGHT(kg)

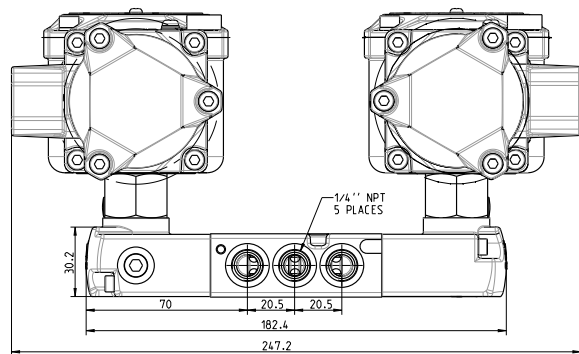
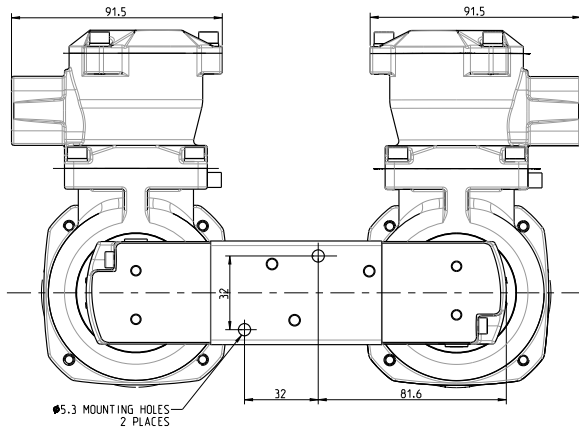
WSJE 551 系列

单头约重: 3.52kg



ITEM 8551A321

FOR OTHER BASIC MODEL REFER
TECHNICAL FILE 545240



ITEM 8551A322

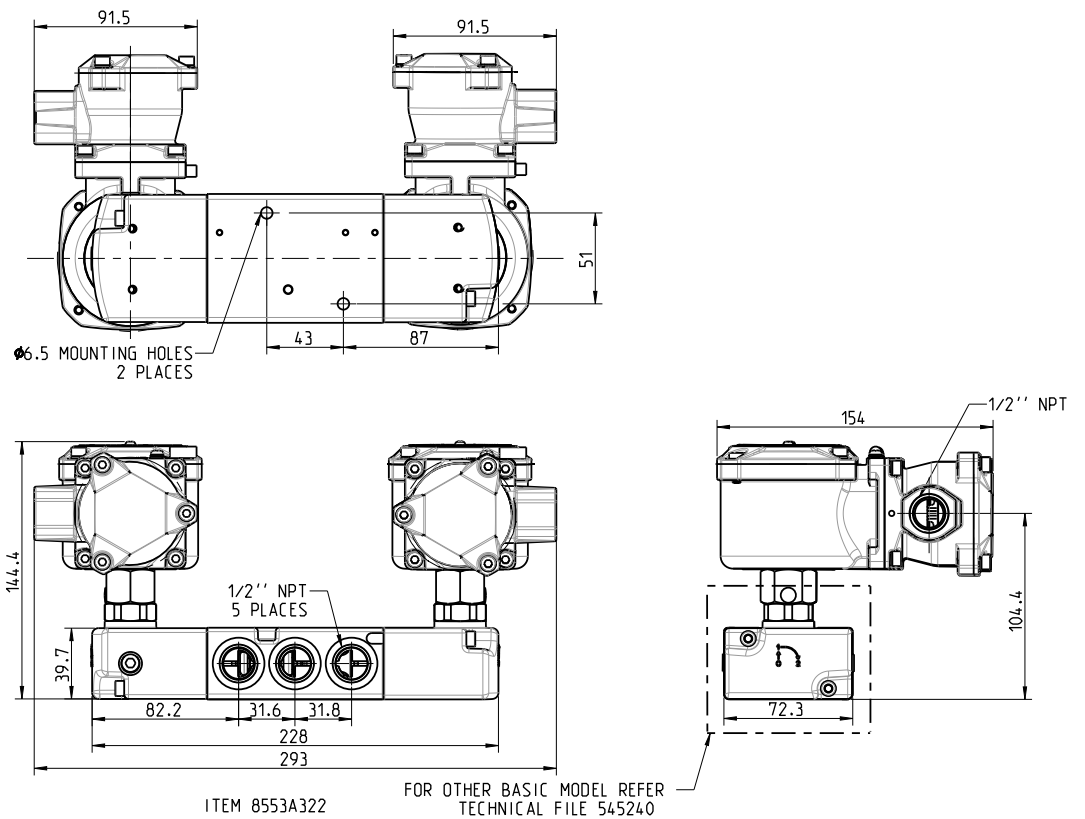
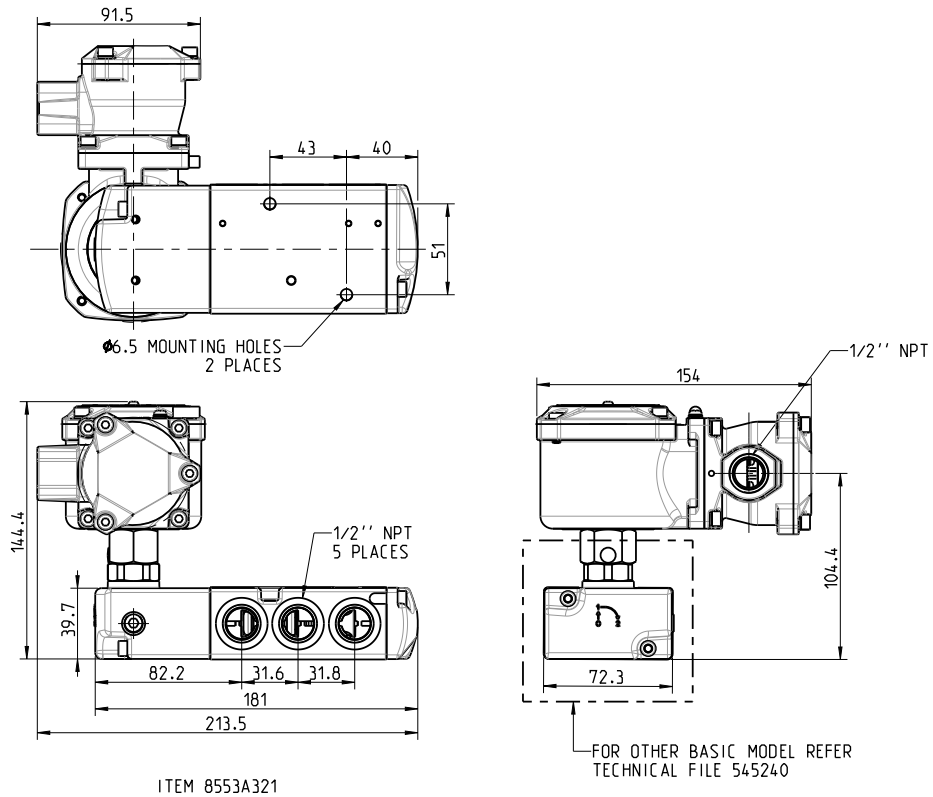
FOR OTHER BASIC MODEL REFER
TECHNICAL FILE 545240

TR000447ZHCN-01_10-21

DIMENSIONS (mm), WEIGHT(kg)

WSJE 553 系列

单头约重: 5.57kg



TR000447ZHCN-01_10-21

Features

- Designed for high flow piloting with no minimum operating pressure required; e.g. power plants, refineries, chemical processing
- Balanced Poppet construction for high flow at minimum power levels
- PTFE rider rings and graphite-filled seals reduce friction and eliminate sticking to provide exceptional service life
- 316 Stainless Steel construction for highly corrosive atmospheres
- Available with manual reset
See Special Service Section

Construction

Valve Parts in Contact with Fluids		
Body	Brass	316 Stainless Steel
Core Tube	305 Stainless Steel	
Stem and Insert	303 Stainless Steel	
Core and Plugnut	430F Stainless Steel	
O-ring Holder	430F Stainless Steel	
Springs	302 Stainless Steel	
Seals and Discs	NBR	FKM
	VMQ (Low-Temperature Construction)	
Rider Ring	PTFE	

Electrical

Standard Coil and Class of Insulation	Watt Rating and Power Consumption				Spare Coil Part Number			
	DC Watts	AC			General Purpose		Explosionproof	
		Watts	VA Holding	VA Inrush	AC	DC	AC	DC
F	11.6	12	12	12	276000	238710	276002	238714

Standard Voltages: 24/50-60, 120/50-60, 240/50-60, and 480/50-60, or 6, 12, 24, 120, and 240 DC.

Solenoid Enclosures

Standard:

For Brass Valves: Standard Solenoid enclosure is Types, 1, 2, 3, 3S, 4, and 4X.

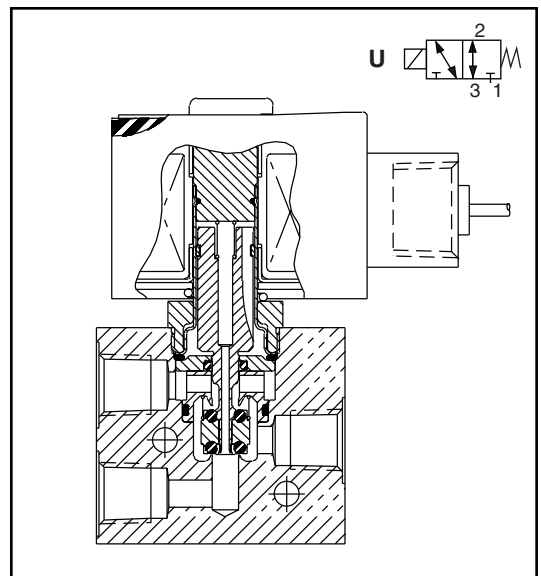
For 316 Stainless Steel valves: Standard Solenoid enclosure is Explosionproof and Watertight Types 3, 3S, 4, 4X, 6, and 6P.

Optional: Explosionproof and Watertight, Types 3, 3S, 4, 4X, 6, 6P, 7, and 9. (To order, add prefix "EF" or, for Explosionproof Stainless Steel trim and hub on Brass-Bodied valves, add "EV" to catalog number.)

See Optional Features Section for other available options.

SIL (Safety Integrity Level) Information:

- PFD (Probability of Failure on Demand) $<4 \times 10^{-7}$ at a confidence factor of 95%.
- SFF (Safe Failure Fraction) according to IEC 61508-2 Table A1 is ≥ 0.99 .
- Only constructions without manual operators apply to the above criteria.



Nominal Ambient Temp. Ranges

8327G041, 042, 021, 022, 031, 032:

-4°F to 131°F (-20°C to 55°C)

8327G051 and 052:

-40°F to 131°F (-40°C to 55°C)

Refer to Engineering Section for details.

Approvals

CSA certified. UL listed General Purpose Valves. Meets applicable CE directives.

Refer to Engineering Section for details.

3-WAY

Specifications (English units)

Pipe Size (ins.)	Orifice Size (ins.)	Cv Flow Factor		Maximum Operating Pressure Differential (psi)			Max. Fluid Temp. °F	Brass Body	316 Stainless Steel Body	Const. Ref.	Watt Rating/ Class of Coil Insulation	
		Ports 1-2	Ports 2-3	Air-Inert Gas	Water	Light Oil @ 300 SSU		Catalog Number	Catalog Number		AC	DC
UNIVERSAL OPERATION (Pressure at any port)												
1/4	1/4	.49	.56	150	150	150	176	8327G041	-	1	12.0/F	11.6/F
1/4	1/4	.49	.56	150	150	150	248	-	EV8327G042	1	12.0/F	11.6/F
UNIVERSAL LOW-TEMPERATURE OPERATION (Pressure at any port)												
1/4	1/4	.49	.56	150	-	-	131	8327G051	-	1	12.0/F	11.6/F
1/4	1/4	.49	.56	150	-	-	131	-	EV8327G052	1	12.0/F	11.6/F

Specifications (Metric units)

Pipe Size (ins.)	Orifice Size (mm)	Kv Flow Factor (m3/h)		Maximum Operating Pressure Differential (bar)			Max. Fluid Temp. °C	Brass Body	316 Stainless Steel Body	Const. Ref.	Watt Rating/ Class of Coil Insulation	
		Ports 1-2	Ports 2-3	Air-Inert Gas	Water	Light Oil @ 300 SSU		Catalog Number	Catalog Number		AC	DC
UNIVERSAL OPERATION (Pressure at any port)												
1/4	6	.42	.48	10	10	10	80	8327G041	-	1	12.0/F	11.6/F
1/4	6	.42	.48	10	10	10	120	-	EV8327G042	1	12.0/F	11.6/F
UNIVERSAL LOW-TEMPERATURE OPERATION (Pressure at any port)												
1/4	6	.42	.48	10	-	-	55	8327G051	-	1	12.0/F	11.6/F
1/4	6	.42	.48	10	-	-	55	-	EV8327G052	1	12.0/F	11.6/F

Dimensions: inches (mm)

FLOW DIAGRAMS

OPERATION	DE-ENERGIZED	ENERGIZED
NORMALLY CLOSED PRESSURE AT 3		
NORMALLY OPEN PRESSURE AT 1		
UNIVERSAL PRESSURE AT ANY PORT		

Const. Ref. 1

IMPORTANT: Valves may be mounted in any position.